

ACCESSORIES

MicroTouch offers a wide range of accessories, from swiveling stands to cameras and MSRs, optimized for signage, point-of-information kiosks, POS terminals, and more.



MA-READER-A1

The new Mach MA-READER-A1 is a state-of-the-art RFID reader, meticulously engineered to integrate seamlessly with the Mach desktop series. It features a versatile USB-C connection, allowing effortless connection to any side of a Mach monitor and AiO. This innovative RFID reader stands out with its hinged cover, enabling front-facing positioning for employee use or rear-facing positioning for customer interactions. Supporting a wide range of RF interfaces and both high and low-frequency card protocols, the MA-READER-A1 offers a comprehensive solution for diverse customer needs.

[See Full Specs](#)



MA-STAND-A2

The MA-STAND-A2 stand is an optional peripheral designed for the new Mach Desktop and Mach All-in-One Series. The stand features a dual-hinge tilting bracket with a 100 x 100 and 75 x 75 VESA mounting pattern. It features an advanced cable management system that keeps cords neatly organized.

[See Full Specs](#)



MA-HUB-B2

Maximize the productivity of your business with the new fan-less Mach Expansion Hub, MA-HUB-B2, specifically designed to integrate seamlessly into the new Mach Series AiO touch computer. The Mach Expansion Hub supports critical business operations by featuring USB-C PD Port, 12 and 24 V powered USB ports, RS-232 serial ports and a cash drawer jack compatible with either 12-volt or 24-volt cash drawers. The Mach Expansion Hub compliments the Mach Android AiO touch computers and provides a stellar solution for any retail, POS, or hospitality business.

[See Full Specs](#)



MA-HUB-B1

Maximize the productivity of your business with the new fan-less Mach Expansion Hub, MA-HUB-B1, specifically designed to integrate seamlessly into the new Mach Series AiO touch computer. The Mach Expansion Hub supports critical business operations by featuring 8 USB-A ports, USB-C PD Port, 12 and 24 V powered USB ports, RS-232 serial ports and a cash drawer jack compatible with either 12-volt or 24-volt cash drawers. The Mach Expansion Hub compliments the Mach AiO touch computers and provides a stellar solution for any retail, POS, or hospitality business.

[See Full Specs](#)

MicroTouch ACCESSORIES



MT-BRKT-DD-A1

The MT-BRKT-DD-A1 dual-display bracket is an optional peripheral designed specifically for the Mach Stand MA-STAND-A2 and the Mach Hub MA-HUB-B2. The rear-facing bracket for a secondary monitor has a VESA 75 x 75 and 100 x 100 mounting pattern. The rugged, all metal construction provides stability while offering a unique design. Cable management space keeps cords neatly organized.

[See Full Specs](#)



MA-HUB-A2

Maximize the productivity of your business with the new fan-less Mach Expansion Hub, MA-HUB-A2, specifically designed to integrate seamlessly into the new Mach Series AiO touch computer. The Mach Expansion Hub supports critical business operations by featuring 8 USB-A ports, USB-C PD Port, 12 and 24 V powered USB ports, RS-232 serial ports and a cash drawer jack compatible with either 12-volt or 24-volt cash drawers. Featuring the same sleek aesthetics and next generation performance as the entire Mach family, the Mach Expansion Hub compliments the Mach AiO touch computers and provides a stellar solution for any retail, POS, or hospitality business.

[See Full Specs](#)



MA-HUB-A1

Maximize the productivity of your business with the new fan-less Mach Expansion Hub, MA-HUB-A1, specifically designed to integrate seamlessly into the new Mach Series AiO touch computer. The Mach Expansion Hub supports critical business operations by featuring 8 USB-A ports, USB-C PD Port, 12 and 24 V powered USB ports, RS-232 serial ports and a cash drawer jack compatible with either 12-volt or 24-volt cash drawers. Featuring the same sleek aesthetics and next generation performance as the entire Mach family, the Mach Expansion Hub compliments the Mach AiO touch computers and provides a stellar solution for any retail, POS, or hospitality business.

[See Full Specs](#)



MA-CAM-A1

The new Mach Camera, MA-CAM-A1, is an optional camera peripheral specifically designed to seamlessly integrate into the new Mach series. Equipped with the ability to plug in to any of the 4 sides of the Mach desktop touch displays with a high-reliable USB-C port, customers have more versatility and flexibility than ever before. Featuring full HD video, an 8 MP camera, and 8.0M sensor resolution, this high-definition camera matches the Mach sleek aesthetics and simplifies the complete solution.

[See Full Specs](#)

MicroTouch ACCESSORIES



MA-LBAR-A1

The new Mach Lightbar, MA-LBAR-A1, is a brand new optional lightbar that can be seamlessly integrated into the Mach desktop series. With the ability to plug into any of the 4 sides of the Mach touch displays, the lightbar can add completely customizable visual cues to users. The lightbar features tri-color long lifetime LED's.

[See Full Specs](#)



MA-MSR-A1

The new Mach MSR, MA-MSR-A1, is a new state of the art MSR reader designed to seamlessly integrate into the Mach desktop series. Equipped with the ability to plug into any side of the Mach monitors due to the easily integrated and reliable USB-C plugin on each corner, this newly designed MSR has versatility like never before. This MSR is a bi-directional, three track, encrypted reader, providing a full solution for a variety of customer use-cases.

[See Full Specs](#)



MA-SCAN-A1

The new Mach 2D scanner, MA-SCAN-A1, is a brand new highly functional barcode scanner specifically designed to seamlessly integrate into the Mach desktop series. With the ability to plug in to any side of the Mach screen via USB-C, customers can experience stellar reliability and ease of integration like never before. The engine is extremely motion tolerant, being able to reach 6 m/s with its image capture at the rate of 120 fps maximum. Supporting a compact, rotatable, locking design with a variety of symbology languages, this scanner is the perfect solution for scanning-intensive applications.

[See Full Specs](#)



2D-PMH-A1

The 2D-PMH-A1 Barcode scanner is a newly designed, state of the art 2D Barcode Scanner. It's sleek, compact, and ultra-modern design aesthetic makes it extremely reliable and convenient for customer work environments. The 2D-PMH-A1 operates in portrait mode. It is extremely motion tolerant with the ability to reach up to 120 fps with the capability to reach up to 6 m/s with its image capture rate. The advanced feature set of this next generation scanner creates a convenient and hassle-free solution for customer scanning applications.

[See Full Specs](#)

MicroTouch ACCESSORIES



2D-LMH-A1

The 2D-LMH-A1 Barcode scanner is a newly designed, state of the art 2D Barcode Scanner. It's sleek, compact, and ultra-modern design aesthetic makes it extremely reliable and convenient for customer work environments. The 2D-LMH-A1 operates in landscape mode. It is extremely motion tolerant with the ability to reach up to 120 fps with the capability to reach up to 6 m/s with its image capture rate. The advanced feature set of this next generation scanner creates a convenient and hassle-free solution for customer scanning applications.

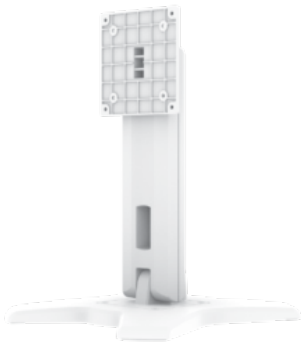
[See Full Specs](#)



MA-STAND-A1

The MA-STAND-A1 stand is an optional peripheral designed for the new Mach Desktop and Mach All-in-One Series. The stand features a dual-hinge tilting bracket with a 100 x 100 VESA mounting pattern. It features an advanced cable management system that keeps cords neatly organized.

[See Full Specs](#)



MS-240-A1

The MS-240-A1 stand is an optional peripheral designed specifically for the DT-238P-MI medical-grade touch monitor. The tilting bracket has a VESA 100 x 100/75 x 75 mounting pattern. Cable management space keeps cords neatly organized.

[See Full Specs](#)

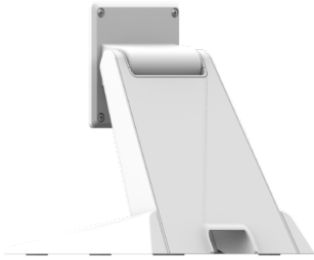


DD-215-A1

The DD-215-A1 dual-display stand is an optional peripheral designed specifically for the IC-215P-AW1, IC-215P-AW2, IC-215P-AW3, IC-215P-AW4 and IC-215P-AA2 models. The forward-facing tilting bracket has a VESA 100 x 100 mounting pattern. The rear-facing tilting bracket for a secondary monitor has a VESA 75 x 75 and 100 x 100 mounting pattern. The rugged, all metal stand provides stability while offering a unique design. Cable management space keeps cords neatly organized.

[See Full Specs](#)

MicroTouch ACCESSORIES



MS-170-A1

The MS-170-A1 stand is an optional peripheral designed for the DT-170P-M1 medical-grade touch monitor. The tilting bracket has a VESA 100 x 100 mounting pattern. Cable management space keeps cords neatly organized.

[See Full Specs](#)



MS-215-A1

The MS-215-A1 stand is an optional peripheral designed specifically for the DT-215P-A1 medical-grade touch monitor. The tilting bracket has a VESA 100 x 100 mounting pattern. Cable management space keeps cords neatly organized.

[See Full Specs](#)



IS-000-A1

The IS-000-A1 stand is an optional peripheral designed specifically for the SK-150P-A1, SK-156P-A1, SK-170P-A1, SK-190P-A1 and SK-215P-A1 models. The tilting bracket has a VESA 100 x 100 mounting pattern. Cable management space keeps cords neatly organized.

[See Full Specs](#)



SS-156-A1

The SS-156-A1 stand is an optional peripheral designed specifically for the DT-156P-A1 and the IC-156P-AA2 models. The tilting bracket has a VESA 100 x 100 mounting pattern. Cable management space keeps cords neatly organized.

[See Full Specs](#)



MSR-150-A1

The MSR-150-A1 is an optional peripheral designed specifically for the DT-150P-A1 touch monitor. This MSR is a three track, bi-directional, encrypted solution for a variety of application use-cases.

[See Full Specs](#)

MicroTouch ACCESSORIES



MSR-156-A1

The MSR-156-A1 is an optional peripheral designed specifically for the DT-156P-A1 and IC-156P-AA2 models. This MSR is a three track, bi-directional, encrypted solution for a variety of application use-cases.

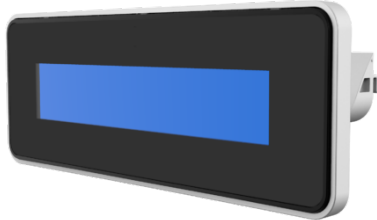
[See Full Specs](#)



MSR-215-A1

The MSR-215-A1 is an optional peripheral designed specifically for the DT-215P-A1 and IC-215P-AA2 models. This MSR is a three track, bi-directional, encrypted solution for a variety of application use-cases.

[See Full Specs](#)



LCM-150-A1

The LCM-150-A1 is an optional peripheral designed specifically for the DT-150P-A1 model. This 2x20 LCM display allows customers to view their order total, line item amount, tax, discounts, and more during the checkout process. Adjustable display for optimal viewing angle.

[See Full Specs](#)



CAM-000-A1

The CAM-000-A1 is an optional peripheral designed specifically for the DT-156P-A1, DT-215P-A1, IC-156P-AA2, and IC-215P-AA2 models. This 2 MP camera can support a wide range of use-cases in your application.

[See Full Specs](#)



www.MicroTouch.com | us.orders@microtouch.com

MicroTouch Interactive, Inc.
200 East Broadway Avenue, Maryville, TN 37804 | (616) 786-5353

The information presented in this specification sheet is intended as general information about MicroTouch products and is subject to change. Product specifications and warranties will be governed by MicroTouch Interactive, Inc. standard terms and conditions of sale. Products are subject to availability. Copyright © 2025 MicroTouch Interactive, Inc. All rights reserved. MT24-1215 - 032525