

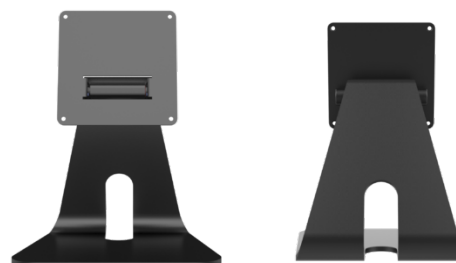
SS-156-A1

Stand



Description

The SS-156-A1 stand is an optional peripheral designed specifically for the DT-156P-A1 and the IC-156P-AA2 models. The tilting bracket has a VESA 100 x 100 mounting pattern. Cable management space keeps cords neatly organized.



Specifications

Dimensions (H x W x D)	234.2 x 183.8 x 169.2mm
Weight (net)	1.97 kg
Weight (gross)	2.88kg
Color	Black
VESA	100 x 100
What's Included	Stand, Screws for VESA Mount