

01-a	1/4/2020	Initial Release		MPB
REV	DATE	DESCRIPTION		BY

THIS DRAWING AND OR TECHNICAL INFORMATION IS THE SOLE PROPERTY OF TES-AMERICA, LLC AND IS FURNISHED FOR AUTHORIZED USE ONLY AND ON THE UNDERSTANDING AND CONDITION THAT IT IS CONFIDENTIAL. NEITHER THIS DOCUMENT NOR THE INFORMATION DISCLOSED HEREIN SHALL BE DISCLOSED TO OTHERS, COPIED, REPRODUCED OR OTHERWISE TRANSFERRED TO OTHER DOCUMENTS, OR USED FOR MANUFACTURING OR ANY OTHER PURPOSE EXCEPT AS AUTHORIZED BY TES-AMERICA, LLC.

TOLERANCING
UNLESS OTHERWISE SPECIFIED
ALL DIMS ARE mm

.X ± 0.20 RADIUS ± 0.15
.XX ± 0.10 ANGLES ± 0.5°

DO NOT SCALE DRAWING

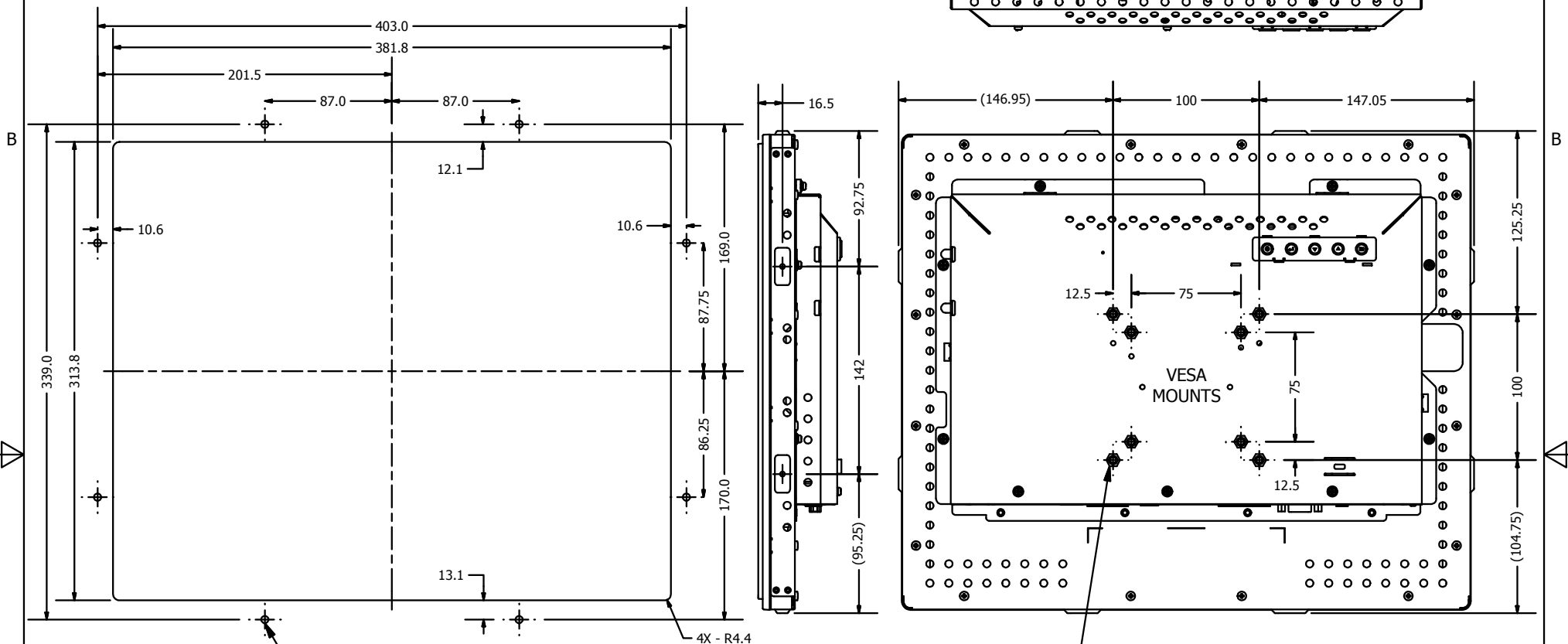
MicroTouch HOLLAND, MI 49423 - USA

OF-170P-A1 - Open Frame Touch Monitor
Overview Geometry

DR: MPB	CK:	Material:	SCALE: NTS
DATE: 1/4/2020			SHEET: 1 OF 3
DWG. No. PA710PU0F0025			VER. 01

THIRD ANGLE VIEW

RECOMMENDED CUSTOMER PANEL CUT-OUT



1. Wooden wall: Ø4.5mm thru holes for M4 screws w/nuts, or no thru holes, screws for wood 4mm.
2. Sheet metal: concealed head threaded studs M4 w/nuts.
3. Only two brackets are necessary for mounting. Drill 4 holes for top/bottom bracket mounting or side bracket mounting.

The distance between the back cover surface and the bottom of the screw hole is 8 mm. Please use four M4 screws with the proper length to mount the monitor if you are not using the included mounting brackets and M4x6 screws.

REV	DATE	DESCRIPTION	BY
01-a	1/4/2020	Initial Release	MPB

THIS DRAWING AND OR TECHNICAL INFORMATION IS THE SOLE PROPERTY OF TES-AMERICA, LLC AND IS FURNISHED FOR AUTHORIZED USE ONLY AND ON THE UNDERSTANDING AND CONDITION THAT IT IS CONFIDENTIAL. NEITHER THIS DOCUMENT NOR THE INFORMATION DISCLOSED HEREIN SHALL BE DISCLOSED TO OTHERS, COPIED, REPRODUCED OR OTHERWISE TRANSFERRED TO OTHER DOCUMENTS, OR USED FOR MANUFACTURING OR ANY OTHER PURPOSE EXCEPT AS AUTHORIZED BY TES-AMERICA, LLC.

TOLERANCING
UNLESS OTHERWISE SPECIFIED
ALL DIMS ARE mm
X ± 0.20 RADIUS ± 0.15
.XX ± 0.10 ANGLES ± 0.5°
DO NOT SCALE DRAWING

MicroTouch HOLLAND, MI 49423 - USA

OF-170P-A1 - Open Frame Touch Monitor
Mounting Geometry

DR: MPB	CK:	Material:	SCALE: NTS
DATE: 1/4/2020			SHEET: 2 OF 3
DWG. No. PA710PU0F0025			VER. 01

THIRD ANGLE VIEW

2

1

2

1

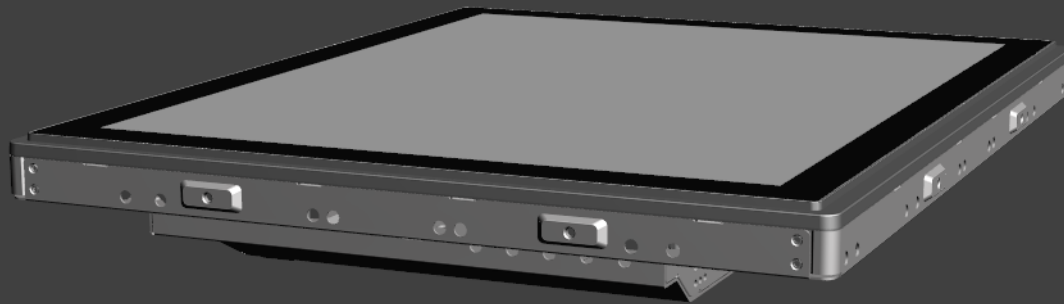
2



1

B

B



A

A

01-a	1/4/2020	Initial Release	MPB
REV	DATE	DESCRIPTION	BY

THIS DRAWING AND OR TECHNICAL INFORMATION IS THE SOLE PROPERTY OF TES AMERICA, LLC AND IS FURNISHED FOR AUTHORIZED USE ONLY AND ON THE UNDERSTANDING AND CONDITION THAT IT IS CONFIDENTIAL. NEITHER THIS DOCUMENT NOR THE INFORMATION DISCLOSED HEREIN SHALL BE DISCLOSED TO OTHERS, COPIED, REPRODUCED OR OTHERWISE TRANSFERRED TO OTHER DOCUMENTS, OR USED FOR MANUFACTURING OR ANY OTHER PURPOSE EXCEPT AS AUTHORIZED BY TES AMERICA, LLC.

TOLERANCING
UNLESS OTHERWISE SPECIFIED
ALL DIMS ARE mm
.X ± 0.20 RADIUS ± 0.15
.XX ± 0.10 ANGLES ± 0.5°
DO NOT SCALE DRAWING



HOLLAND, MI 49423 - USA

OF-170P-A1 - Open Frame Touch Monitor
3D Overview

DR: MPB CK: DATE: 1/4/2020

Material:

SCALE: NTS

DWG. No. PA710PU0F0025

SHEET: 3 OF 3

VER. 01



2



1